

BY Josep Llusà



Structures

- Round steel tube $\varnothing 25 \times 1,5$ mm in cold laminate.
- Legs in injected aluminium.
- Manual semi-automatic welding in arc robotics with gas-driven steel cable.

Certificates

UNE EN581-3:2007
Bifma X5.1-2011
UNE EN581-3:2007

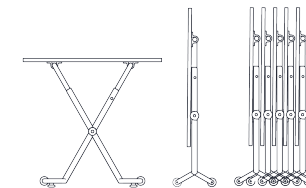
Finishes

- Lacquered or chromed structure.
- Top in Melamine.

Measures



W 1200 / 1400 / 1600 / 1800
H 740
D 600 / 670 / 800



Accessories

- Separator

Designed with contract in mind, this ingenious table system can be easily folded, stacked and stored. These qualities make it ideal for a short-term table needs in multifunctional environments. Its flexibility and manageability means anybody can fold and move the Folio tables easily with one hand, stack them in the desired place of storage, or transport them easily on the optional trolley. The outcome is huge savings in assembly, disassembly and storage.

Finishes

Structure

Chrome



4 Cromado

Lacquered



b (RAL 9016)
White



n (RAL 9005) Jet
Black



w (RAL 5005) Blue



E (RAL 9016) May
Green



y (RAL 1023)
Yellow



O (RAL 2010)
Signal Orange



R (RAL 3002)
Carmine Red



2 (RAL 7032)
Pebble Grey



7 (RAL 9006)
Bright Aluminium



9 (RAL 9016)
White



3 (RAL 9005) Jet
Black



G (RAL 7016)
Anthracite Grey

Worktop

Beech

Dark Birch

Birch

Oak

Lacquered

Chrome

2D-Wood

Polypropylene

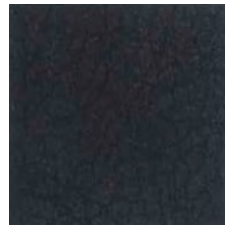
Wood

3D-Wood

Upholstered



Camira



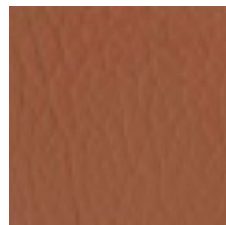
Spradling



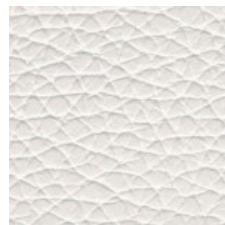
Gabriel



Kvadrat



Antic Cuir



Leder Reinhardt

Fenix NTM

HPL

Melamine

Polished aluminium

Steel