

COMA WOOD

enea

BY Lluscá Design



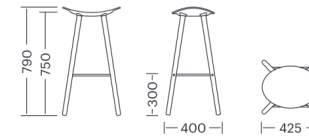
Structures

- Solid wood legs (beech/oak) ø25/35mm.
- Seat base support in injected aluminium L-2630 UNE 38-263.
- Footrest in stainless steel.
- Seats in polypropylene, plywood (beech/oak) and upholstered.

Certificates

UNEEN 16139:2013/Corrected version 2015 (Level L2, heavy use).

Measures



Accessories

- Felt leg pads

This minimalistic looking, oak or beech 4-legged stool has a smart, simple design that affords comfortable seating, with multiple finishes and materials being available. It comes in three heights; high, medium and a lower bench style, which makes it ideal for a wide range of spaces, especially those where there is little free room.

Seat

Polypropylene



505 (RAL 5005) Violet
014 (RAL 6017) May Green
019 (RAL 1023) Yellow
013 (RAL 2010) Signal Orange



409 (RAL 3002) Carmine Red
015 (RAL 7032) Pebble Grey
017 (RAL 7004) Signal Grey
414 (RAL 7016) Anthracite Grey



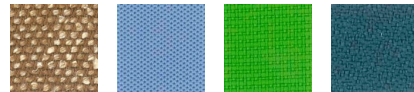
400 (RAL 9005) Jet Black
003 (RAL 9016) White

Seat

Upholstered Camira



Advantage Blazer Hemp Main Line Flax



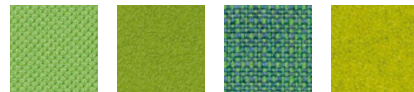
Silk Sprint Urban Xtreme

Upholstered Spradling

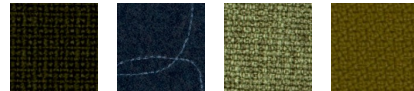


Valencia

Upholstered Gabriel



Atlantic Comfort Crisp Europost

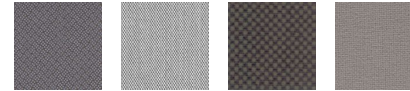


Fame Luna Medley Step



Step Melange

Upholstered Kvadrat



Revive 2 Steelcut Trio Field Hallingdal



Messenger Remix Revive 1

Upholstered Antic Cuir



Piel Serie 100 Piel Serraje

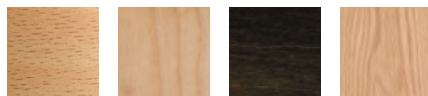
Upholstered Leder Reinhardt



Napoli Leather

Estructura/asiento

Wood



Beech Y - Birch S - Birch X - Oak

