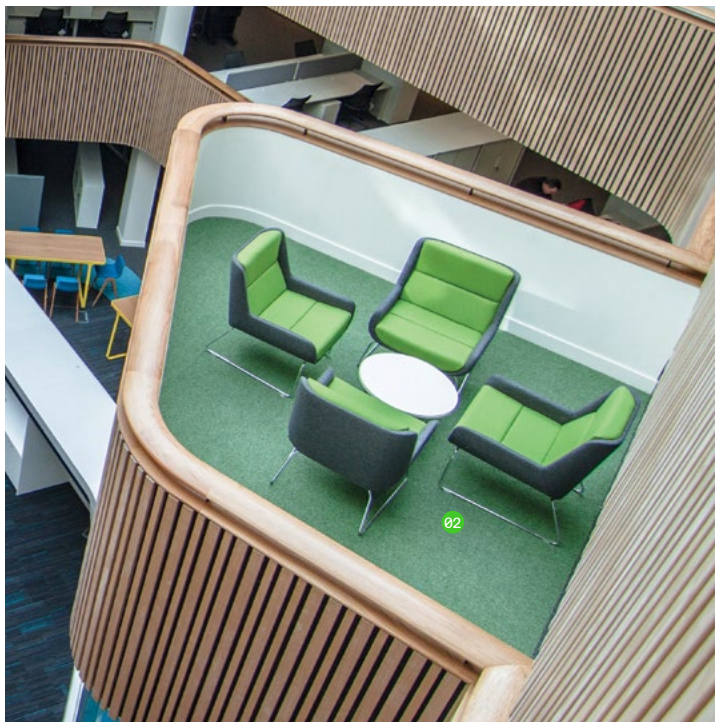


# hush low

## Chair





## Design

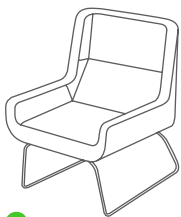
Hush Low is the little brother of the Hush wingback chair. Hush Low has a slender internal frame creating an elegant, graphic shape, but equally providing a generous seat. Hush Low is designed to be comfortable but with an upright positive sit; making it an ideal retreat but perfect for working, reading eating or just taking some time out.

## Technical

The main body of the Hush Low chair is constructed with moulded plywood and CMHR foams. Base options are constructed from mild steel and finished with hard wearing polyester powder coat. The wooden base is constructed from turned hardwood and finished with a matt lacquer.

\*All dimensions quoted are rounded to the nearest 5mm or nearest 1/2 inch.

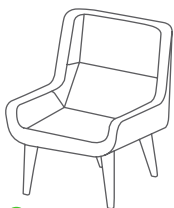
## Sizes



**02**  
**HULOBSL**  
 hush low chair  
 with sled base  
**metric (mm)**  
 W720 D760 H880 Seat 430  
**imperial (in)**  
 W28.5 D30 H34.5 Seat 17



**03**  
**HULOBSW**  
 hush low chair  
 with swivel base  
**metric (mm)**  
 W720 D760 H880 Seat 430  
**imperial (in)**  
 W28.5 D30 H34.5 Seat 17



**01**  
**HULOBWD**  
 hush low chair  
 with wooden legs  
**metric (mm)**  
 W720 D760 H880 Seat 430  
**imperial (in)**  
 W28.5 D30 H34.5 Seat 17

## Base Finish Options



Chrome Swivel Base



White or Black Swivel Base



Turned Solid Oak or Walnut Legs



Chrome Sled Base



White or Black Sled Base

## Other Options



2 Tone Upholstery



High Arms

Hush low chair designed by naughtone



### general manufacture description

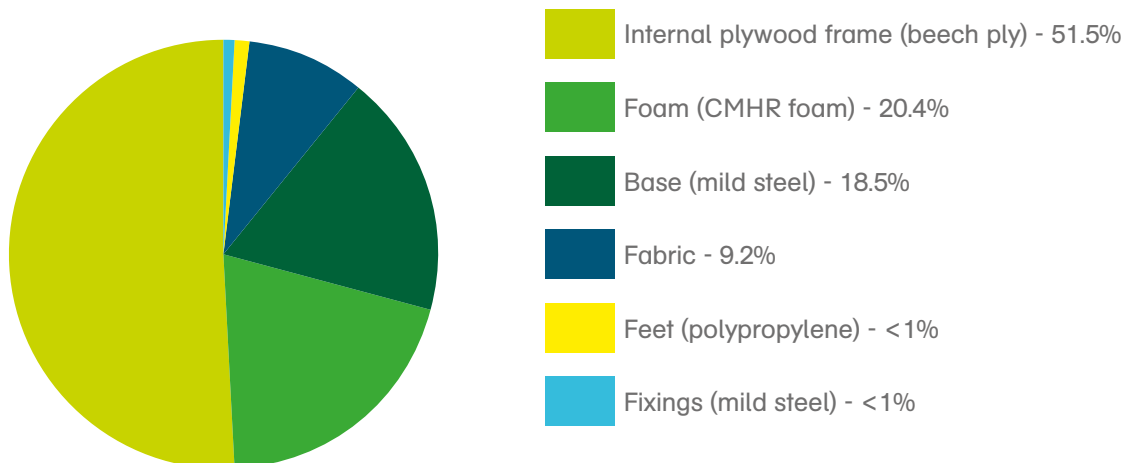
The Hush low chair innershell is constructed from 1 solid moulded plywood form. The frame is then covered with CMHR foams and fully upholstered over with fabric. The Hush low shell and base is assembled together with dry fixings and the upholstered shell can be easily broken down into separate materials with hand tools.

The Hush low chair sled base is machine bent from mild steel rod, then weld jointed together and hand polished to a smooth surface. The steel rod is then finished with either chrome plating or polyester powder coat.

### facts

- naughtone is FISP and ISO14001 certified
- 21.2kg Total weight
- 41.4% Recyclable (base, foam, fixings & feet)
- 49.4% Compostable (plywood frame)
- 16% Recycled content (base, chip foam & fixings)
- 49.3% Reuseable content
- 57.4% Recycled & Recyclable content

### contents



### support

further information for all our products can be downloaded from the website [www.naughtone.com](http://www.naughtone.com).

\* where sustainable sources are quoted and a chain of custody is required by a customer - this must be indicated on the purchase order to naughtone. A chain of custody requested after an order has been placed or delivered may be difficult to recover.

Hush low chair designed by naughtone



### general manufacture description

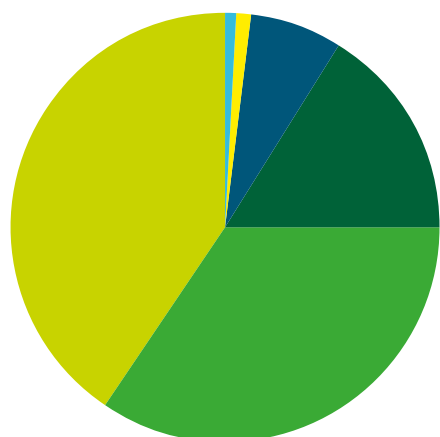
The Hush low chair innershell is constructed from 1 solid moulded plywood form. The frame is then covered with CMHR foams and fully upholstered over with fabric. The Hush low shell and base is assembled together with dry fixings and the upholstered shell can be easily broken down into separate materials with hand tools.

The Hush chair swivel base is cut from mild steel plate and mild steel tubing. A separate swivel mechanism is pressed into the top of the tube before the top plate is attached. The components can be separated with hand tools for end of life recycling. The base is then finished with either chrome plating or polyester powder coat.

### facts

- naughtone is FISP and ISO14001 certified
- 26.6kg Total weight
- 51.8% Recyclable (base, foam, fixings & feet)
- 41.1% Compostable (plywood frame)
- 24.9% Recycled content (base, chip foam & fixings)
- **41.1% Reuseable content**
- **76.7% Recycled & Recyclable content**

### contents



- Internal plywood frame (beech ply) - 41.1%
- Base (stainless steel) - 35.1%
- Foam (CMHR foam) - 16.3%
- Fabric - 7.3%
- Feet (polypropylene) - <1%
- Fixings (mild steel) - <1%

### support

further information for all our products can be downloaded from the website [www.naughtone.com](http://www.naughtone.com).

\* where sustainable sources are quoted and a chain of custody is required by a customer - this must be indicated on the purchase order to naughtone. A chain of custody requested after an order has been placed or delivered may be difficult to recover.



Hush low chair designed by naughtone

### general manufacture description

The Hush low chair innershell is constructed from 1 solid moulded plywood form. The frame is then covered with CMHR foams and fully upholstered over with fabric. The Hush low shell and base is assembled together with dry fixings and the upholstered shell can be easily broken down into separate materials with hand tools.

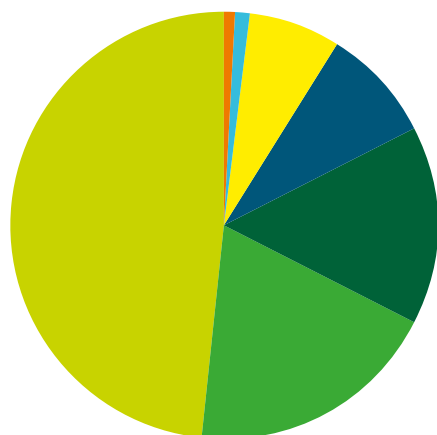
The Hush low chair wooden legs are turned from square blocks of sustainable solid oak. The Oak is sealed with spray matt lacquer. The oak legs have a mild steel subframe which is fabricated and welded together from mild steel bar and mild steel tube. The subframe is finished with a powder coat finish. The subframe and oak legs are assembled together with dry fixings and are easily separated for end of life recycling.



### facts

- naughtone is FISP and ISO14001 certified
- 22.3kg Total weight
- 35.2% Recyclable (base, foam, fixings & feet)
- 56.1% Compostable (plywood frame & base)
- 13.4% Recycled content (base, chip foam & fixings)
- 56.1% Reuseable content
- 48.6% Recycled & Recyclable content

### contents



- Internal plywood frame (beech ply) - 48.9%
- Foam (CMHR foam) - 19.4%
- Timber sub frame (mild steel) - 15.4%
- Fabric - 8.7%
- Base (solid oak) - 7.2%
- Feet (polypropylene) - <1%
- Fixings (mild steel) - <1%

### support

further information for all our products can be downloaded from the website [www.naughtone.com](http://www.naughtone.com).

\* where sustainable sources are quoted and a chain of custody is required by a customer - this must be indicated on the purchase order to naughtone. A chain of custody requested after an order has been placed or delivered may be difficult to recover.

